

See more. Do more.

FACILITY
EXPLORER

BY JOHNSON CONTROLS



Technology that fits into your view of building management. whatever and wherever that is.



Whether you are after something as simple as temperature control, or as complex as controlling hundreds of field devices, Facility Explorer is your building management solution. Facility Explorer from Johnson Controls allows you to create building management systems as simple or as sophisticated as you need. You get flexibility, without sacrificing ease of use, servicability or affordability.

With Facility Explorer, you can :

- Improve energy efficiency
- Reduce operating costs
- Improve comfort
- Preserve existing technology investments
- Reduce time to install and commission
- Increase equipment life
- Lower maintenance costs
- Identify problems quickly and easily
- Improve staff productivity

**FACILITY
EXPLORER**

BY JOHNSON CONTROLS

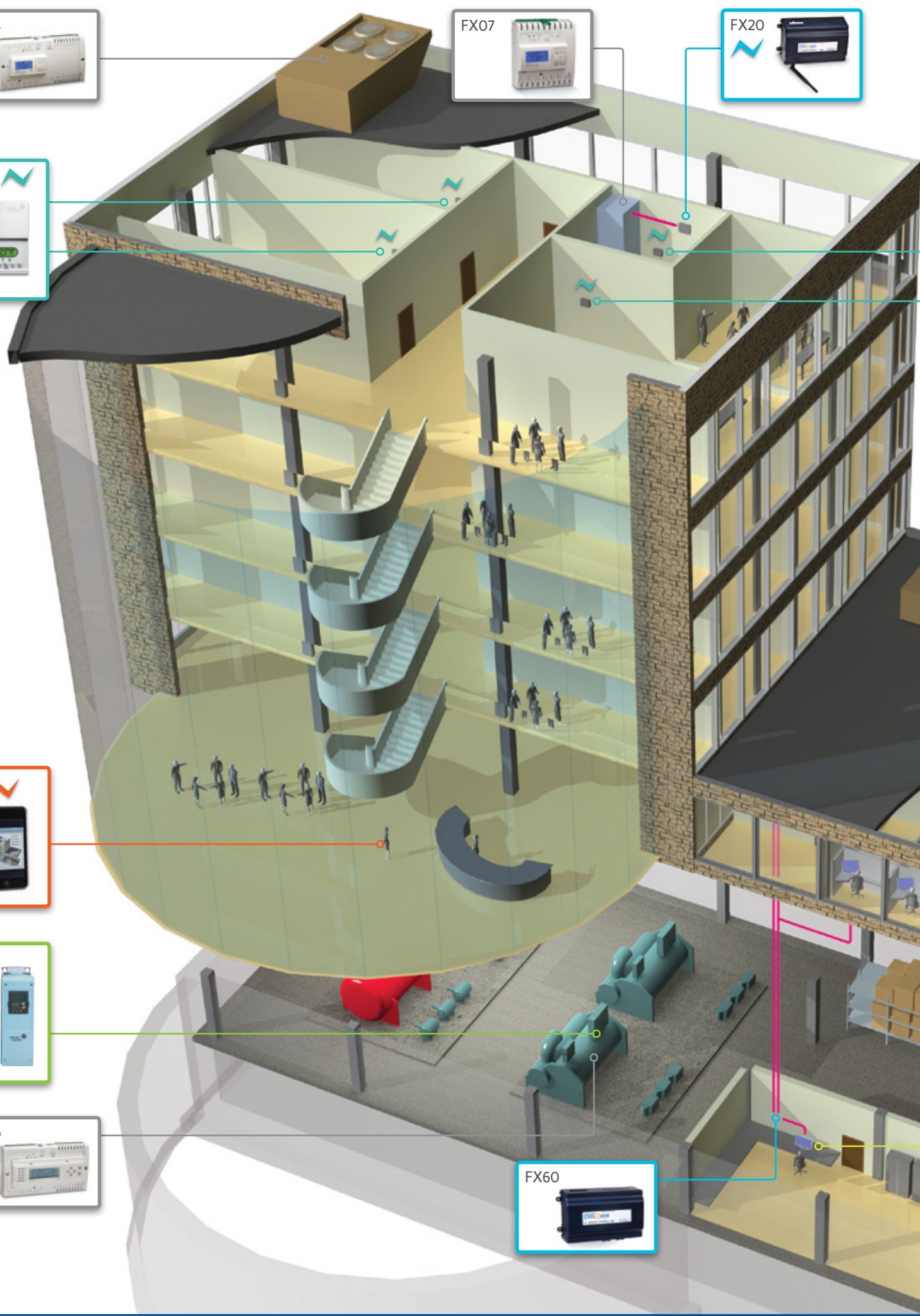


Web accessibility. More visibility, faster solutions.

Facility Explorer provides industry-leading Web accessibility beyond just the supervisory level, allowing you to see and act on vital systems information from more places. You can view information at the individual field controller level or across your entire IT network, from wherever you are, not just your workstation. This improved, higher level of visibility into building operations means you can resolve problems faster, maintaining occupant comfort and minimizing deviations from energy saving strategies. Do what you need to do, when it needs to be done.

Less complex. More friendly.

Everyone wants a user-friendly interface. Facility Explorer makes building control easier than ever thanks to an exclusive systems development appliance that combines the benefits of standard systems integration with the flexibility to handle tasks unique to your installation.

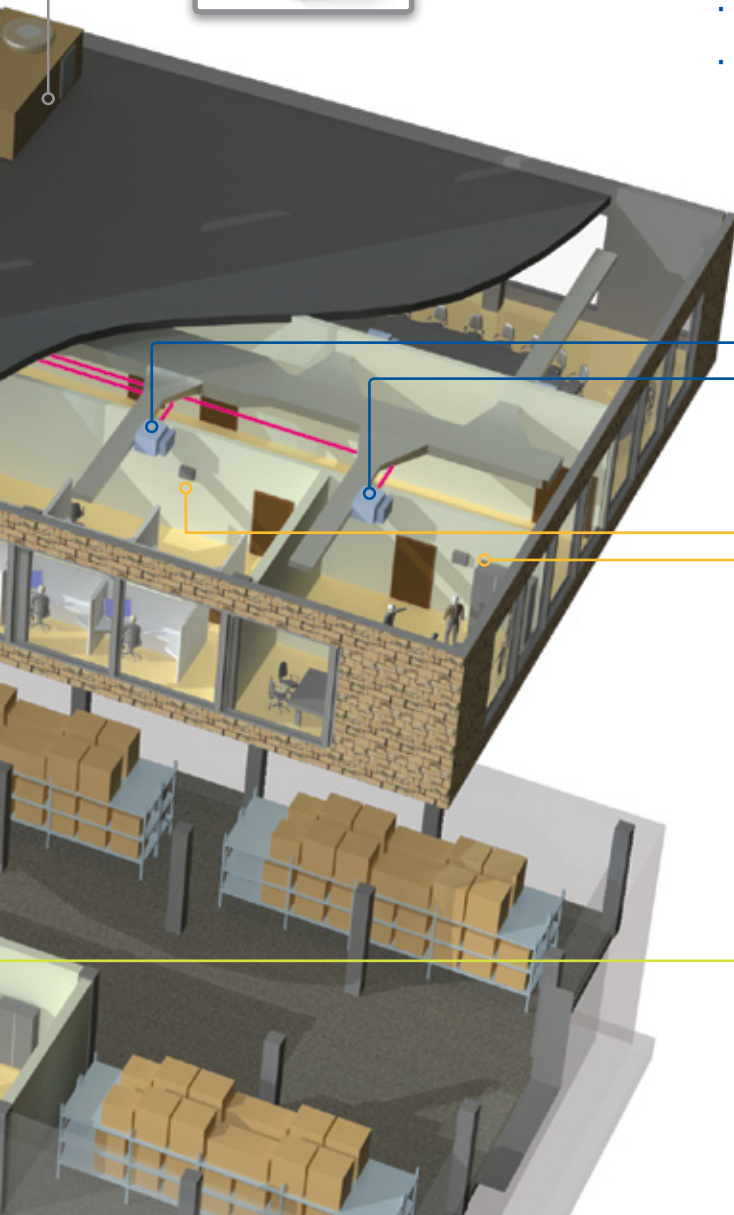
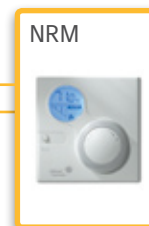


An integrated, comprehensive controls solution.

With Facility Explorer, you can create a modular, scalable building automation system, featuring a Web-based user interface. FX field controllers provide direct closed-loop control over mechanical and HVAC equipment. Supervisory controllers give you system-wide coordination for building operations.



- Fully programmable
- Multiple networking communications
- Communicates via existing IT services
- Network-wide data sharing
- Remote access via LAN, WAN, internet, intranet, or dial-up
- Wireless handheld access
- Wireless TEC communications





The results?

Better control. Faster installation and commissioning.
Fewer changes. And lower energy and operation costs.

How far you go is up to you.

Facility Explorer's interoperability gives you seamless connectivity to BACnet®, LonWorks® and Johnson Controls N2 open controllers, giving you more possibilities for future expansion and upgrades. Facility Explorer controllers and displays also support software-based integration gateways for other devices that use proprietary or industry-specific protocols. Plus, you get all the hardware and software necessary for easy installation in new and existing facilities.

To see more and do more with Facility Explorer, just see your Johnson Controls Authorized Building Controls Specialist for details on designing, installing and commissioning the system that fits your requirements.



**FACILITY
EXPLORER**

BY JOHNSON CONTROLS



With Facility Explorer technology from Johnson Controls, you can create a building automation system that's as simple or as sophisticated as you need. For details, see your Johnson Controls Authorized Building Controls Specialist.

LONWORKS® is a registered trademark of Echelon Corp.
BACnet® is a registered trademark of the American Society of Heating, Refrigerating and Air Conditioning Engineers (ASHRAE).

Printed on recycled paper.

© 2009 Johnson Controls, Inc. P.O. Box 423, Milwaukee, WI 53201 Printed in USA PUBL-5491 (Rev. 7/09)
www.johnsoncontrols.com

