

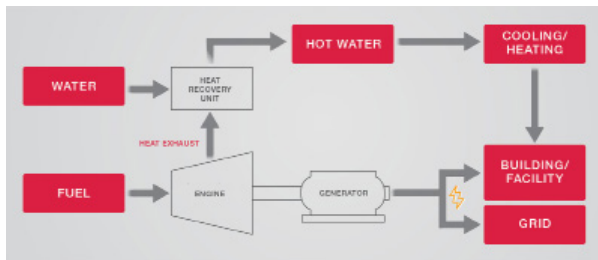


CP5WN



Using natural gas or propane, the CP5WN's high-efficiency generator provides 5kW of electrical power. The engine heat is captured and heats water at a rated temperature of 149°F for immediate use or storage in your facility. Excess electricity production may be sold back onto the grid in certain states, creating a credit on your electric bill.

CHP Basic Flow



Model		CP5WN		
		CP5WN-SNB (*5)	CP5WN-SPB	
Power	Output	Rated Output	5 kW	
		Voltage	240/120 V, 60Hz (208V, 277V)	
		Phases/Wires	Single phase, 3 wire	
		Modulation	0.3 to 5 kW with optional CT/Transducer kit (*1)	
Fuel	Gas type		Natural gas	Propane gas
	Pressure	Standard	8 in WC (2kPa)	11 in W/C (2.8kPa)
		Range	4 ~ 10 in WC (1 ~ 2.5kPa)	8 ~ 13 in W/C (2 ~ 3.3kPa)
	Consumption (LHV)		60,700 BTU (17.8 kW)	
	Consumption (HHV) (*3, *4)		0.61 therms/hr	0.72 Gallon (*3)
			67,300 BTU (19.7 kW)	66,000 BTU (19.3 kW)
		0.67 therms/hr	0.72 Gallon (*3)	
Heat output	Rated recovered heat		34,100 BTU/h (10kW)	
	Rated hot water temp.	Inlet	140 F (60 C)	
		Outlet	149 F (65 C)	
	Rated Hot water flow rate		7.3 GPM (27.6 L/min)	
Maximum hot water temp. (Outlet)		163 F (73 C)		
Input power	Voltage, Frequency		240V, 60Hz	
	Starting current		12.5 A	
	Power consumption	Radiator fan stop	0.23 kW	
		Radiator fan run	0.33 kW	
Gross Efficiency (LHV)	Overall efficiency		84%	
	Electrical generation efficiency		28%	
	Exhaust heat recovery ratio		56%	
Sound level	Radiator fan stopped		51 dB (A)	
	Radiator fan operating		54 dB (A)	
Dimensions	Width		43.3 in (1,000 mm)	
	Depth		19.7 in (500 mm)	
	Height		59.1 in (1,500 mm)	
	Net weight		882 lb (400 kg)	
Maintenance Interval			10,000 hrs	
Standard Warranty			2 Years; Unlimited Hours	
YES Product Protection	10 Years / 30,000 hrs		Optional	
	10 Years / 60,000 hrs		Optional	
	15 Years / 90,000 hrs		Optional	
Emissions & Certifications			EPA Certified UL2200 Certified CSAC22.2 No 14 Certified CSAC22.2 No 100 Certified UL1741/IEEE1547 Certified (*2)	

*1: The minimum modulation amount is dependent on the CT and Transducer specifications.

*2: External inverter models

*3: Propane gas calculations for fuel consumption are based on converting LHV to HHV: LHV=84,250 BTU/Gallon, HHV=91,420 BTU/Gallon

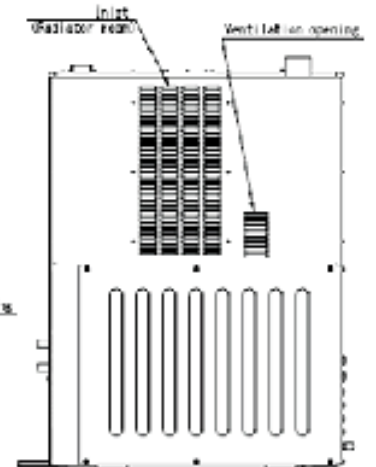
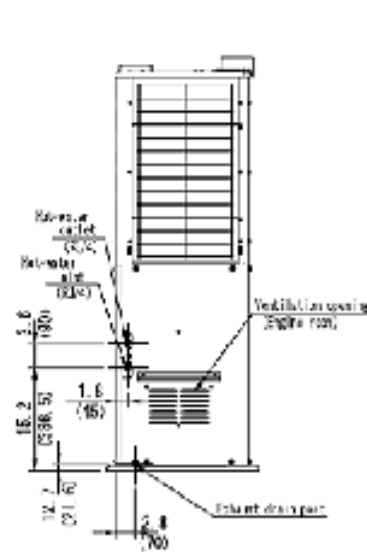
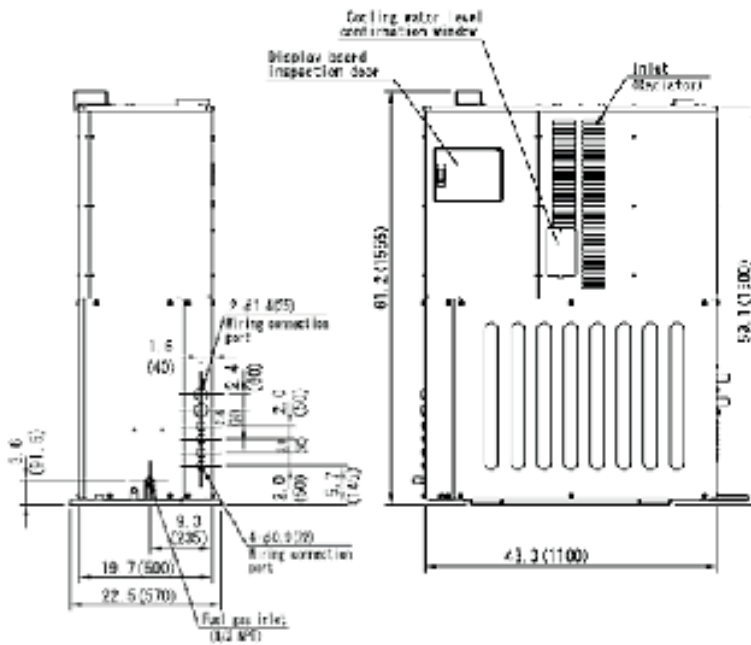
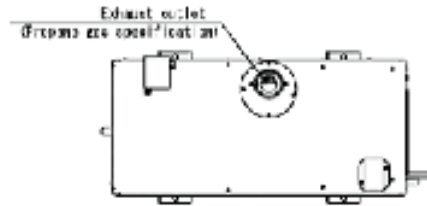
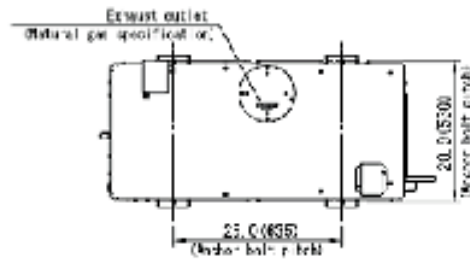
*4: Natural gas calculations for fuel consumption are based on converting LHV to HHV: LHV= 983 BTU/scf, HHV = 1,089 BTU/scf

*5: CP5WN-SNB model discontinued

NOTE: Due to YANMAR's ongoing commitment to quality, specifications, ratings and dimensions subject to change without notice. Improper installation, adjustment, alteration, service or maintenance can cause property damage or personal injury. Installation and service must be in accordance with current specifications, ratings and dimensions and be performed by a qualified installer and servicing agency.



CP5WN



Unit : inch (mm)

NOTE: Due to YANMAR's ongoing commitment to quality, specifications, ratings and dimensions subject to change without notice. Improper installation, adjustment, alteration, service or maintenance can cause property damage or personal injury. Installation and service must be in accordance with current specifications, ratings and dimensions and be performed by a qualified installer and servicing agency.